



Turriff Primary Enhanced Provision Centre



Aberdeenshire council are committed to providing the right support, in the right place, at the right time. In all schools across Aberdeenshire the Staged Intervention Process is used to assess needs and identify the required support. The least intrusive method of intervention is always implemented at first. All our children have access to universal support within their educational establishments. Targeted support is needed by some children and young people experiencing short or long term additional support needs. This targeted support is provided within schools (PSAs, ASL Teacher, CLD, PSW, I&PT) and from other partner agencies (Health, Social Work, Community Agencies). However, some children require an enhanced level of provision in addition to mainstream education to meet complex additional support needs. Within the Turriff cluster Turriff Academy and Turriff primary school are designated enhanced provision centres where a specialist level of intervention is available either on a part-time, full-time or outreach basis. Currently in our enhanced provision we have pupils accessing full-time, blended and outreach support. This means that our children and young people are able to access a flexible, inclusive support structure accessing both mainstream and targeted specialist support.



A designated sensory area to enable delivery of a sensory curriculum.



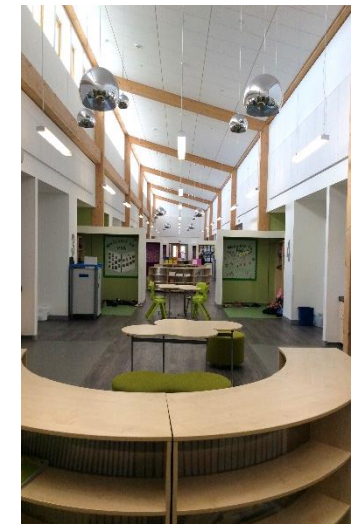
In class support and outreach with class teachers to develop capacity and confidence with staff.



A quiet area for use by children who need space for time alone, keep safe or to work with an adult or in a small group.



A nurturing room with a life skills area in order to promote the learning of social and independence skills.



Small group working targeting specific needs and skills.



What do we provide for our children and young people?

Therapeutic Interventions

Focused Activities

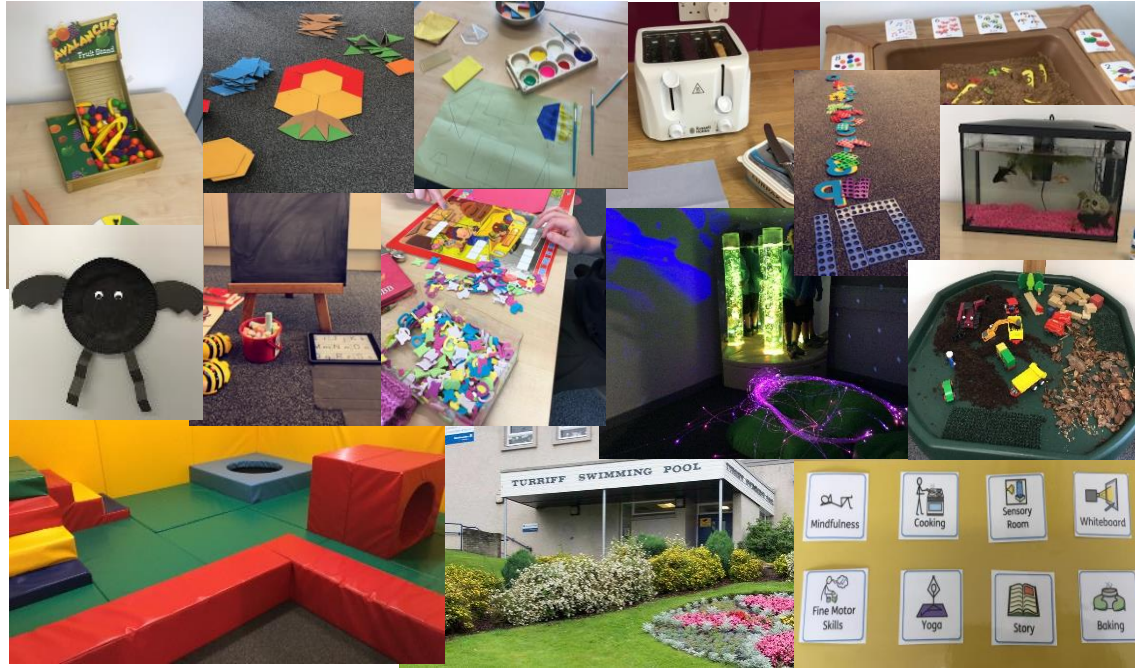
Preparation

Flexible Timetable

Life Skills

Pre-learning

Nurturing Environment



Total Communication

Gross and Fine Motor Skills

Adaptable Activities

Movement Breaks

Community Involvement

Transitions

Support for Parents

Social and Emotional Support

Cognitive Skills Focus

Learning in real life contexts

Learning through pupils interests

Health and wellbeing

Emotional Wellbeing

Social Stories